

								
Mute	Mute	Mute	Mute	Mute	Mute	Mute	Mute	Mute
								
Solo	Solo	Solo	Solo	Solo	Solo	Solo	Solo	Solo
								
Kick	Snare	Hi Hat	Tom	Tom	Drum OH	Drum OH	Bass	Main



DL806

DL1608

QUICK START GUIDE

- MUTE
- 1
- 2
- 3
- 4
- MIX
- LR
- ALL
- A
- B
- C
- D
- LR
- AUX
- FX
- SUB
- VCA
- MASTERS

Five Simple Steps

Hello friends and welcome to the future of mixing. This document is just what it says it is: a Quick Start Guide. No introduction, no filler, no fluff. Just the very basics to get you started quickly.

In the following pages, you will be taught how to make connections, set levels and weave your way around the Master Fader app.

For now, disregard anything not mentioned in these first few pages. Our first goal is to ensure that the mixer and app are communicating with each other followed by driving signal through the mixer.

Upon completion, if you're still hungry for more, the Master Fader Reference Guide contains major in-depth coverage of everything listed within these pages.

Let's get started in five simple steps...

1. Download the Master Fader app.
2. Connect the iPad to the mixer.
3. Make the audio connections.
4. Fire up the mixer and launch the Master Fader app.
5. Set the level on channel 1.

1. Download the Master Fader app:

The Master Fader app is necessary because it controls the mixer. No worries, though, as it's easy to download. You've downloaded apps on an iPad before and it's the same method to download this app, as well.

You will want the latest-and-greatest version for the absolute best in functionality and versatility, so even if the Master Fader app is already installed, it's a good idea to check for updates.

2. Connect the iPad to the mixer:

The iPad easily slides onto the mixer right to left, face up, Home button on the left; keep sliding until it mates with the iPad's dock connector.

NOTE: The docked iPad should be as naked as possible! Remove all covers, skins, cases, stickers, etc.

NOTE: Included with your mixer are several tray and dock options. The correct one depends on the type of iPad you're using. Please refer to the [Compatibility Matrix*](#):

3. Make the audio connections:

Now it's time to make some audio connections.

First, make sure the power and phantom power switches are both OFF.



Also, be sure all gain knobs and the phones knob are fully counter-clockwise to start.



At the very least you will need the following items to get started:

- 1) various cables
- 2) microphone
- 3) speakers
- 4) headphones

Five Simple Steps



1) Plug the microphone into the channel 1 input.



If a condenser mic (or other mic that requires phantom power) is connected to the channel 1 input, then engage the phantom power switch by pressing up on it. If not, leave it be. The phantom power LED will illuminate red when the switch is engaged.

4. Fire up the mixer and launch the Master Fader app:

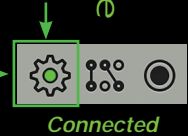
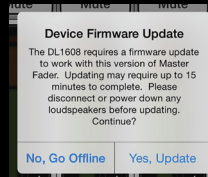
Press the top edge of the power switch to turn on the mixer. The power LED will illuminate green when engaged.

Now launch the Master Fader app to get it started. Go ahead and tap that app!

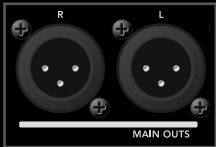
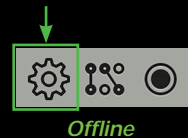
After updating, the *Mixer View* will be displayed. Here we can verify connectivity. At this point there are only two possibilities: connected or offline.

The image below show the *Mixer View* on an iPad that is currently connected. Notice that the gear icon circle is green.

At this point, a popover may appear, prompting you to update the firmware. Do so by following the on-screen instructions before continuing.



In the unusual instance that the mixer is offline the gear icon circle will be gray. If so, please follow these directions again, step-by-step. If it remains offline, please contact our splendid technical support heroes.



2) Connect the main outs of the mixer to the line-level inputs of powered speakers or to the line-level inputs of an amplifier.



3) Plug your favorite pair of headphones into the 1/4" phones output jack.

Plug the female end of the AC line cord into the included 12V DC power supply [Power Block].



Attach the locking barrel connector to the mixer's power connector and rotate the outer ring clockwise to lock.

Now plug the male end of the AC line cord into a live grounded AC outlet.

5. Set the level on channel 1:

Getting signal through the mixer is easy. Simply start speaking into the mic at a real-world level.

While doing this, turn the channel 1 gain knob clockwise until the meters on the channel 1 fader bounce between the green and yellow.

Do you notice the signal | clip LED located near the upper-right area of the channel 1 gain knob?

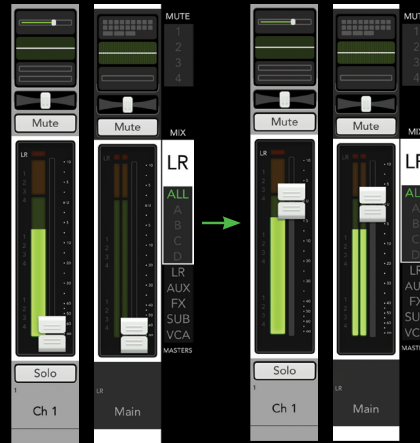


This LED illuminates green (to indicate signal) and red (to indicate clipping). Clipping is undesirable; turn the gain knob counter-clockwise if this LED constantly flashes red.

Five Simple Steps

Are you ready to kick things up a notch? Touch the channel 1 fader on the iPad and drag it up to around the 0 dB mark. Slowly do the same to the master fader, while continuing to rock out on the mic.

You should now see signal on the input and output meters, as well as hear the signal through the speakers.



Now let's get signal through the headphones.



WARNING: The headphones amp is loud and could cause permanent hearing damage. Even intermediate levels may be painfully loud with some headphones.

BE CAREFUL! Always turn the phones knob all the way down before connecting headphones or doing anything new that may affect the headphone volume. Then turn it up slowly while listening.

Put the headphones on and slowly turn the phones knob clockwise until you hear the vocals coming through the cans.



Congratulations! You just downloaded the Master Fader App, connected the iPad to the mixer, made audio connections and set the level on your first channel!

Let's move onto a deeper understanding of the hardware and software.

Mixer Hardware : Connections

||rtyxw>

You already hooked up a mic to the channel 1 input and got signal out of the speakers and headphones. This means that there are an additional 15 inputs at your disposal!

All channels may accept a mic or line-level signal on an XLR connector, while channels 13-16² may also accept a 1/4" line-level signal.

The steps for setting the levels on the remaining channels is exactly the same as it was for channel 1.

Ey|Wirhw>

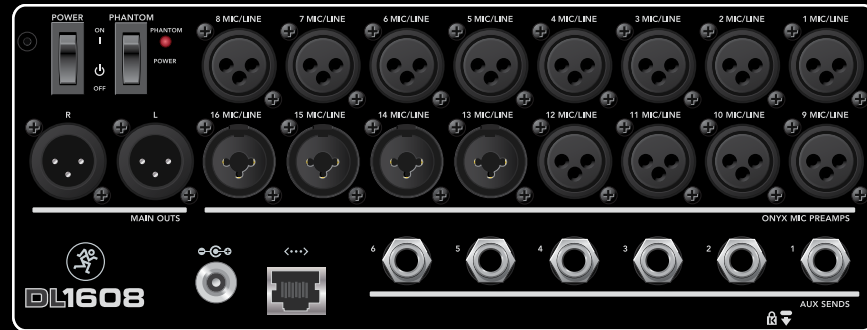
Also on the rear panel of the mixer are six aux sends³. Here you may run up to six separate monitor mixes by connecting these balanced 1/4" jacks to the line-level inputs of powered speakers or to line-level inputs of an amplifier.

Headphone amplifiers and/or external effects devices may also be connected to the aux sends.

¹ Seven additional inputs on the DL806.

² Channels 5-8 on the DL806.

³ Four aux sends on the DL806.



Rix{sv0>

The real power of the mixer becomes clear when it is controlled wirelessly. All that's necessary is to connect it to a Wi-Fi access point. It is possible to utilize an existing network, but with a dedicated router you have complete control, resulting in the best possible performance.

Nearly any router found at a reputable store will work. There are four things to look for:

- (1) **Ethernet connection.** Make sure the router connects via Ethernet, NOT USB!
- (2) **DHCP.** The router needs to be able to assign an IP address to the mixer.

In most cases, the router will handle this task. However, there are some

routers that can't complete this simple assignment and should not be used. Routers with a single Ethernet port often will not work well with a DL Series mixer for this reason.

(3) **802.11n | 802.11AC.** We prefer and strongly suggest going with an 802.11n or 802.11AC as your Wi-Fi mode. However, 802.11g also works.

(4) **5GHz.** We prefer and strongly suggest going with 5GHz as your band. However, 2.4GHz also works.

(5) **Name.** We are not in the business of suggesting what router to use, but choosing one with an instantly recognizable, quality, trustworthy brand name doesn't hurt.

Wireless Setup

The ability to mix wirelessly is certainly one of the most exciting features of this mixer-iPad marriage! Let's go through the steps for setting up a wireless connection.

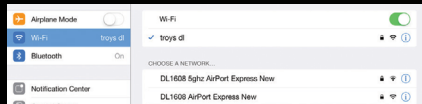
Step 1: Turn the mixer off.

Step 2: Plug in the router. Most of the default settings will work with your mixer, but you might need to configure the router first. Please refer to the *router's* manual for detailed information.

Step 3: Connect an Ethernet cable between the mixer and router. Make sure you are using a LAN port on the router, not a WAN port!

Step 4: Turn on the router first and wait for it to completely boot up. Good? Now turn on the mixer.

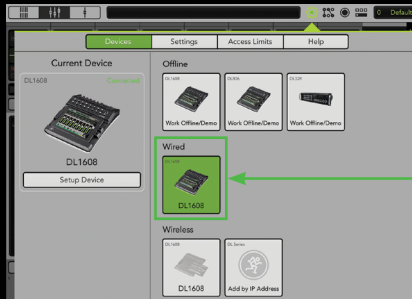
Step 5: In the iPad's Wi-Fi settings page, select the name of the wireless network you created. This is (most likely) the default name of the router. You may be required to enter the router's default password at this time.



Step 6: Slide the iPad into the dock of the mixer (if it isn't already).

Step 7: Launch the Master Fader app.

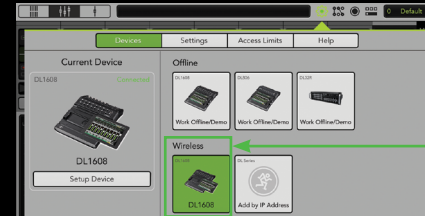
Step 8: Click the gear icon to display the tools menu. From here, select Devices.



Step 9: There will be three unique sections listed: Offline, Wired and Wireless. At this point the Wired DL806 or DL1608 should be selected.

Now leave the Tools menu and confirm that the DL806 or DL1608 may be controlled from Master Fader over the wired connection.

Step 10: Go back to the Tools > Devices menu. Now undock the iPad from the mixer and select the Wireless DL806 or DL1608 from the devices list.



You should be able to control the mixer wirelessly!

If you cannot control the mixer wirelessly and/or the DL806 or DL1608 is not shown in the wireless devices list, please follow the directions again, step-by-step, and also check out the Master Fader Reference Guide for more detailed instructions. If all else fails, contact our splendid technical support heroes.

Channel Strips

The Master Fader app has powerful features, but it is easy to learn...and the more you use it, the more intuitive it becomes.

To reiterate, this document contains just the very basics to get you started quickly. Please refer to the Master Fader Reference Guide for detailed information of everything mentioned within these pages...and then some.

Master Fader is comprised of three main views ❶. The currently displayed view will illuminate dark gray; *Mixer View* in this case.

Left to right, the three main views are:



Overview: This displays all important functions of all input and output channels at one time in one place.



Mixer View: This includes the key mixing controls of every input and output of the mixer.



Channel View: This is where plug-in processing is adjusted on individual channel inputs and outputs, including EQ, dynamics, FX and more.

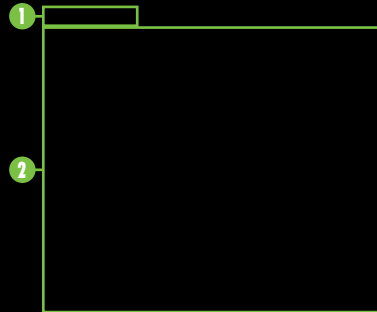
Since we're looking at the *Mixer View* (below and right), we'll start there.

Mixer View channels include:

- Input Channels
- iPad | Playback Channel
- FX Channels (Reverb, Delay)
- Subgroup Channels
- VCA Channels

To view a different set of channels in the *Mixer View*, simply touch anywhere on the black background of a channel strip ❷ and drag or flick left or right.

- **Input Channels:** These channels control the input routing assignments, levels, DSP and more.



- **iPad | Playback Channel:** This channel controls the routing assignment, level, DSP and more from the iPad music library (or any other audio app on the iPad that supports background audio playback).



- **FX Channels:** These channels control the FX routing assignments, levels, DSP and more.

- **Subgroup Channels:** These channels control the subgroup routing assignments, levels, DSP and more.

- **VCA Channels:** These channels control the VCA routing assignments levels and more.

Channel Strips • Selector Strip

Here is what is included on *most* of the aforementioned channel strips, top to bottom:

Input Routing: This is a convenient location to adjust all assignments and sends for each channel. It displays the digital trim level in the *Mixer View*.

EQ: This displays the current EQ processing applied to each channel.

Gain Reduction: These meters display the input channel gain reduction from the gate and compressor.

Pan | Balance: These allow you to adjust how much of the channel signal is sent to the left versus the right outputs.

Mute: These mute – turn off – the signal on the channel(s).

Channel Faders, Input Meters, Channel Assignments and Selected Mix Color: Channel faders show and adjust the level of each channel going to the selected mix.

The input meters display the input signal level to the channel before all channel processing.

The channel assignments display is located to the left of each input channel's meter. It displays that channel's sub, VCA and mute group assignments.

Surrounding each channel is the selected mix color. The color will change dependent on what output is selected (with white for LR).

Solo: Listen to specific channel(s) in the headphones.

Channel ID: This displays and allows you to edit the name, image and color of each channel.



The selector strip **3** and master fader **4** are arguably the most important tools of the mixer. So much so, in fact, that they are always displayed no matter if you're in the *Mixer View* or *Channel View*.

We'll start with the selector strip **3** top to bottom:

Mute Groups: This is where you quickly mute/unmute multiple channels and/or outputs at once.

Mix Selector: This is where to change the selected mix. The currently selected mix (and corresponding color) will be displayed.

View Groups: This is where to change view groups, so you see only certain channels, hiding the rest.

Masters: This allows you to look at all (or some) of the master channels and control them simultaneously.

Master Fader

And now for the master fader ④ top to bottom:

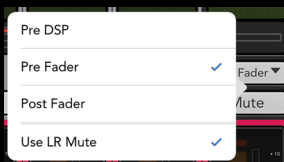
Output Routing: This is where to engage / disengage channel, output and group assignments for each output.

PEQ / GEQ: This displays the current PEQ and GEQ settings.

Gain Reduction: This meter displays the gain reduction from the output compressor.

Balance [LR]: This allows you to adjust how much of the output signal is sent to the left versus the right outputs.

Pre / Post [Aux / FX]: This allows you to configure the output mix as Pre DSP, Pre Fader or Post Fader.



Mute: This mutes – turns off – the signal at the output.



Master Fader, Output Meter, Assignments and Selected Mix Color: The master fader adjusts the output level of the selected output.

The output meter displays the output signal level.

The assignments display is located to the left of the output meter. It displays the output's VCA and mute group assignments.

Surrounding the master fader is the selected mix color. The color will change dependent on what output is selected (with white for LR).

Solo [Aux / FX]: Listen to specific output(s) in the headphones.

Master Fader ID: This allows you to edit the name, image and color of the selected output.

That is the *Mixer View* in a nutshell. Again, the Master Fader Reference Guide goes into massive detail regarding the *Mixer View*, so if you seek additional information, you can get your fix there!

Channel View

Let's move on to the *Channel View* where processing is adjusted on individual channel inputs and outputs, including EQ, dynamics, FX and more.

For the most part, all *Channel Views* work relatively the same.

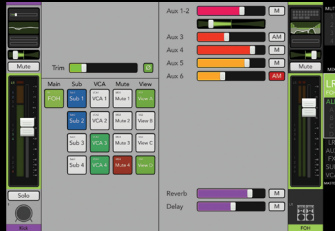
To access a *Channel View*, tap that channel's EQ curve, gain reduction meters, FX image or master fader's PEQ/GEQ or gain reduction meter.

To view the same channel, but a different *Channel View*, simply touch anywhere on the gray background and swipe left or right.

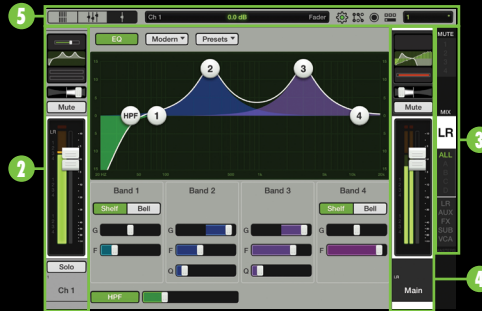
To view the same *Channel View*, but a different channel, simply touch anywhere on the gray background and swipe left or right.

Input *Channel View* includes:

Input Routing where you access assignments, sends and more for each input...



EQ where you adjust the channel EQ processing to alter the tonal balance of the signal...



Gate | Comp where you use the gate and compressor to adjust and alter the channel dynamics...

FX where you select from a wide variety of effects and modify their parameters...



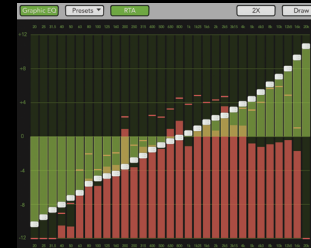
Note that in every *INPUT Channel View* the selected channel 1, selector strip 2 and master fader 3 are always present.

Furthermore, the navigation bar 4 lies horizontally at the top of every single view. Navigation bar? Yeah, we'll get to that shortly...stay tuned, we're still in the *Channel View*!

Output *Channel View* includes:

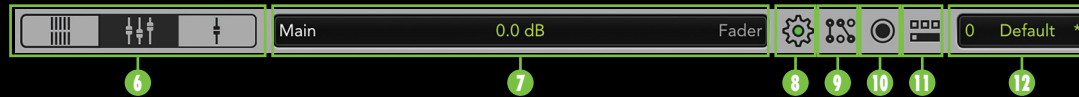
Output Routing where you access assignments, sends and more for each output...

PEQ | GEQ where you adjust the EQ processing to alter the tonal balance of the output...



Comp | Limiter | Delay where you may use the compressor, limiter and delay to adjust and alter the output dynamics...

Navigation Bar • Conclusion



On the previous page, something about a “navigation bar” was revealed. It is always displayed horizontally across the top no matter what view is open.

If I was a gamblin’ man, I’d bet that you’re reading this quick start guide front to back, left to right (assuming, of course, that you actually are reading this). That said, we’ll tackle the navigation bar left to right, as well.

We already discussed the first three navigation bar buttons several pages ago, so let’s move on to the Current Parameter Display.

- ➊ **Current Parameter Display:** The CPD shows the channel and value of the current parameter being adjusted.
- ➋ **Tools:** Tools is where to select between devices, choose settings and set access limits.
- ➌ **I/O Patch:** The I/O Patch allows you to choose which signals you wish to record. Speaking of recording...

➍ **Recording | Playback:** This is where to record and play back your masterpieces.

➎ **Quick Access Panel:** The QAP allows for fast control over critical functions such as clearing solos, various effects and monitor controls.

➏ **Shows:** This is where to load and save shows and snapshots and configure channel safes.

Conclusion: And there you have it! As mentioned throughout, this is just a Quick Start Guide. Nearly everything you need to utilize your DL806 or DL1608 mixer and Master Fader app is referenced here. Having said that, the Master Fader Reference Guide is infinitely more in-depth and is a fantastic resource for increasing your knowledge about each of the features listed within these pages.

Riih liptC

- Visit www.mackie.com/support for the Reference Guide.
- Telephone 425-487-4333 or toll-free at 800-898-3211 to speak with one of our splendid technical support chaps (Monday through Friday, normal business hours, Pacific Time).

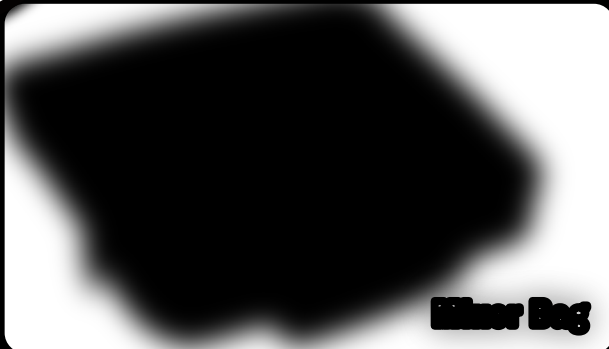
16220 Wood-Red Road NE
Woodinville, WA 98072 • USA
Phone: 425.487.4333
Toll-free: 800.898.3211
Fax: 425.487.4337
www.mackie.com

©2015 LOUD Technologies Inc. All rights reserved. Apple, iPad, iPhone and iPod touch are trademarks of Apple Inc., registered in the U.S. and other countries. All other marks are Registered Trademarks, or Trademarks, of LOUD Technologies in the United States and other countries. DL806 and DL1608 Patent Pending. All specifications, descriptions and screen shots subject to change.

“Made for iPad” means that an electronic accessory has been designed to connect specifically to iPad and has been certified by the developer to meet Apple performance standards. Apple is not responsible for the operation of this device or its compliance with safety and regulatory standards. Please note that the use of this accessory with iPad may affect wireless performance.



ACCESSORIZE YOUR **DL806/DL1608**



Filter Bag



Dust Cover



Tray Elite



Rackmount Elite